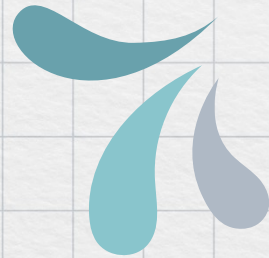




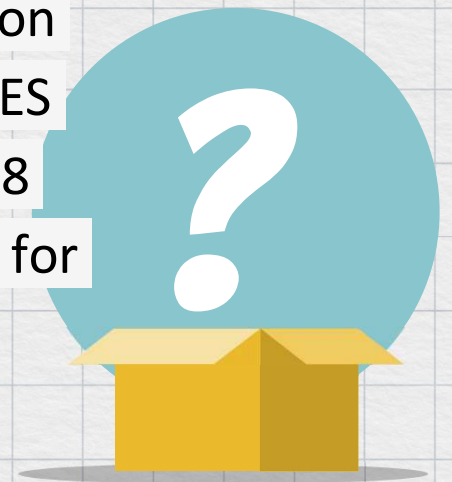
Loudon County Schools
Proposed
Strategic Improvement
of Facilities

Did you know?

History

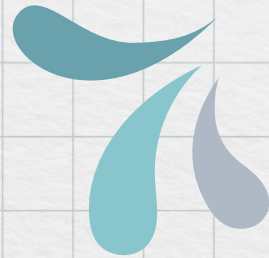


- District 5-Year Plan: District leadership will use enrollment numbers and growth trends to make the most effective use of the district's facilities and to allow for growth in the county.
- School Board directed district leadership to look at options for expanding facilities at EES, NMS, PES, & LHS CTE in the Fall of 2021
- School Board decided the best solution was a new 7-12 school on the North End of the county and restructuring grade levels at EES (664 students) from K-4 to K-3 and NMS (752 students) from 5-8 to 4-6. This plan makes 7-8 classrooms at each school available for growth and doesn't further compound the traffic issues at this joint campus.

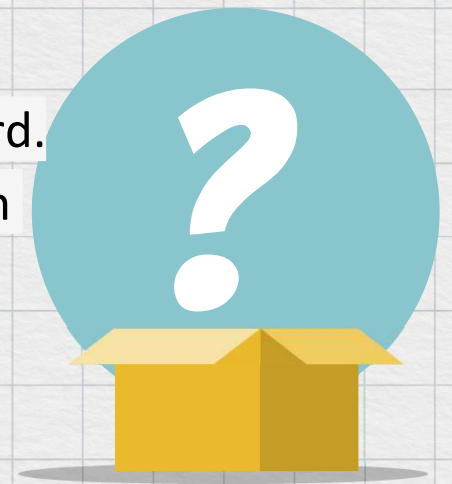


Did you know?

History



- In the fall of 2021, parents of North Middle School were surveyed as to their interest in sending their kids to a county operated 7-12 school: 70% were interested in that option
- The School Board felt this approach addressed our current growth issues, as well as, providing county parents a county option for grades 9-12 with school board representation. (Currently 48% of students at Lenoir City High School live outside the City so only vote for representatives on the county school board, not the city school board.)
- The County Director of Schools and School Board Chairman met with The Lenoir City Schools Director and Board member to share the proposed plan in the fall of 2021





Enrollment & Capacity

School	2020	2021	2022	2023	Availability
Eaton	671	664	676	665	No open classrooms
Fort Loudoun	371	373	370	385	Six open classrooms
Greenback	627	621	663	686	Four open classrooms
Highland Park	371	390	397	392	One open classroom
Loudon Elem	577	572	653	726	No open classrooms
Loudon High	662	712	734	742	Three open classrooms
North Middle	728	770	778	749	No open classrooms
Philadelphia	477	492	515	544	No open classrooms
Steekee	203	199	201	189	One open classroom
Total	4687	4793	4987	5078	
Increase		+106 (2.3%)	+194 (4.0%)	+91 (1.8%)	

Eaton & North Middle

2020	2021	2022	2023
671	664	676	665
728	770	778	749

...to tell the story for you.

- Eaton and North Middle currently have no open classrooms and are utilizing smaller spaces as classrooms like the closet and book nook.
- Guidance, Social Worker, and Computer Science teachers are on a cart at Eaton.

Eaton



Social Worker



Intervention



Philadelphia

2020	2021	2022	2023
477	492	515	544
	3.1%	4.7%	6.0%

...to tell the story for you.

- Philadelphia currently has no open classrooms and are utilizing smaller spaces as classrooms like the two visitor locker rooms and closet area.
- Guidance teacher is on a cart and music is held in the gym

Philadelphia



Locker Room



Closet



Loudon High

2020	2021	2022	2023
662	712	734	742
	7.5%	3.1%	1.0%

...to tell the story for you.

- Increased demand for Career and Technical classes
- Expanding space for Machining/Welding and Automotive

Loudon High School



Machining/Welding



Automotive



Greenback

...to tell the story for you.

2020	2021	2022	2023
627	621	663	686
		6.8%	3.5%

- Increased demand for gym utilization – Certain times during the week there are 3 classes in gym at same time from elementary, middle and high school
- 10 athletic teams need to use the gym, last year elementary basketball teams practiced as early as 6 AM
- Condition of facilities and ADA compliance

Greenback



GBS Bleachers



LHS Bleachers



Previous Building Projects



- New Greenback School 2013
- New Fort Loudoun Middle 2013
- Philadelphia Cafeteria addition 2013
- Office complex and combining Loudon Elem & old Fort Loudoun Middle 2014
- Additional Highland Park wing 2017
- Additional Loudon High wing 2017
- Additional Band room at North Middle 2017
- In 2014, Loudon Elementary had 461 students and currently both buildings are full with no open classrooms at 726
- BOE is remodeling interior space to add four classrooms and moving a Pre-K classroom to open up a fifth classroom for growth

Births, Census & Permits



Year	Kindergarten	Births	Percent
16-17	402	515	78%
17-18	402	550	73%
18-19	403	543	74%
19-20	425	526	80%
20-21	362	518	70%
21-22	417	543	77%
22-23	459	531	86%
23-24	404	481	84%

Census
2010 Census 48,556
2020 Census 54,886
2023 Est. Census 60,591
19.1% population under 18

Year	Loudon	LC	County	Total
2019	56	28	370	454
2020	92	66	403	561
2021	101	505	601	1207
2022	132	140	500	772
2023	117	122	448	687

637 new parcels created in unincorporated areas 2020-24

Growth Data

TNSDC 2020 to 2070 Tennessee Population Projections Boyd Center for Business & Economic Research

Filters

- Slide to Choose Projection Year
2028
- 2020 2070
- Urban/Rural Counties
All Counties
 - Metropolitan Statistical Area
All counties
 - Development District
All areas

Select a county to start

Unselect county to view state-level values in charts and indicators.

- Henry
- Hickman
- Houston
- Humphreys
- Jackson
- Jefferson
- Johnson
- Knox
- Lake
- Lauderdale
- Lawrence
- Lewis
- Lincoln
- Loudon
- McMinn
- McNairy
- Macon
- Madison

Projected Population

60,507

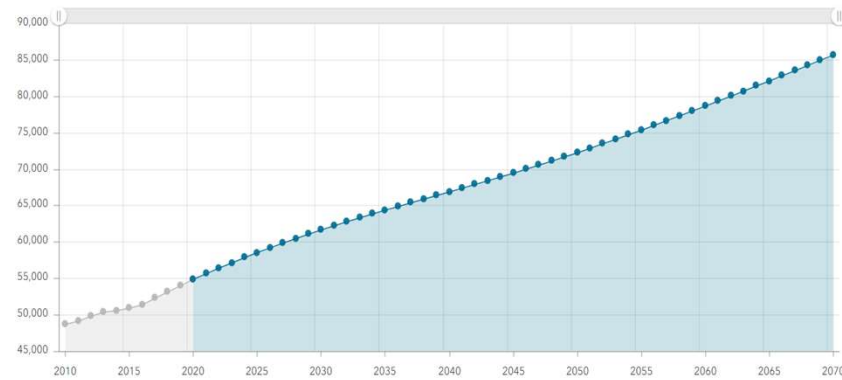
in 2028

Population Change from 2020

+5,597

10.2% increase

Estimated and Projected Population 2010 to 2020 are estimates. 2021 to 2070 are projections



Tennessee Annual Growth Rate

0.68% increase

since 2027

Loudon County Annual Growth Rate

1.04% increase

since 2027

- Projection Overview
- County Map
- Age
- Race and Ethnicity



knox news.



[Subscribe](#) [Sign In](#)

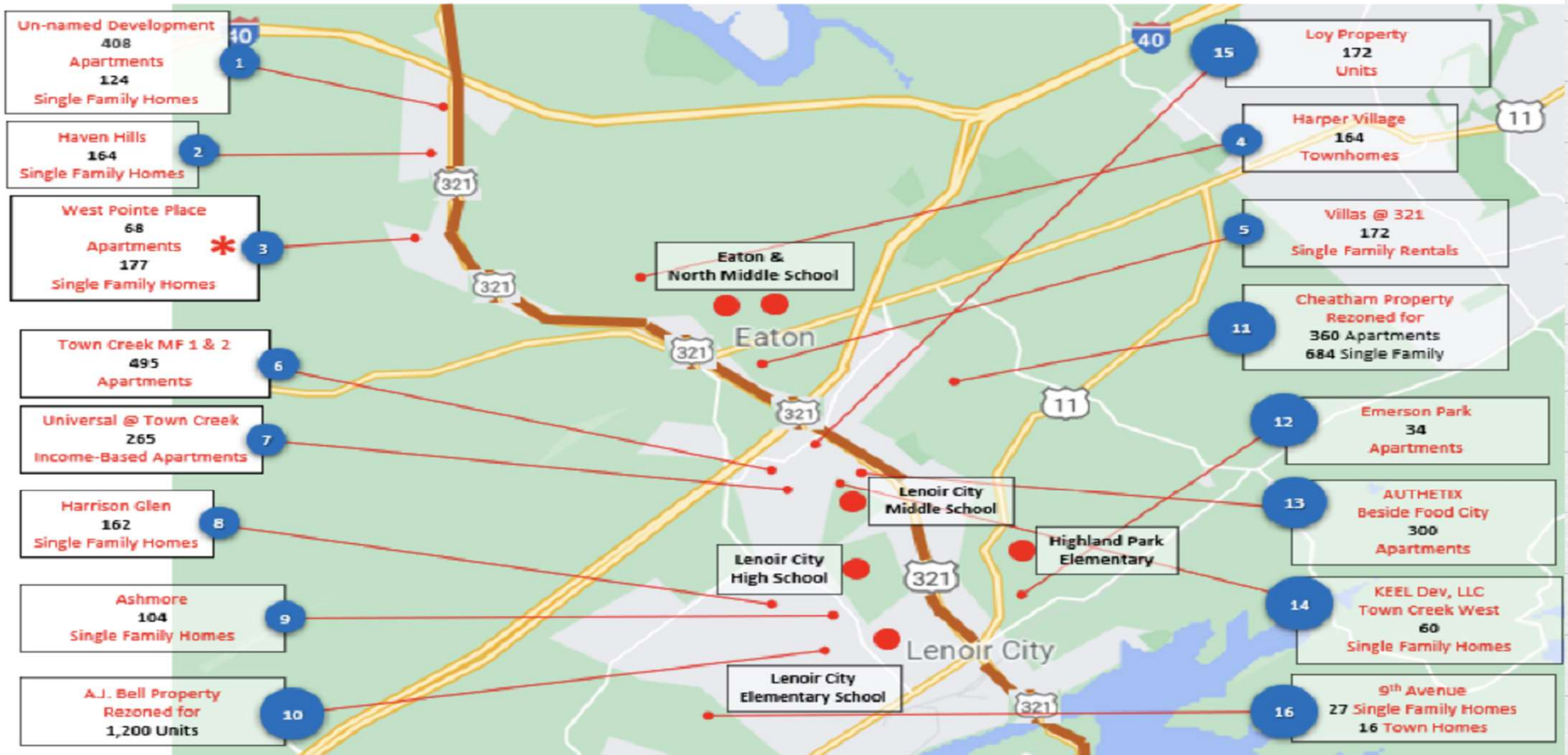
What Tennessee counties experienced the most growth by people?

Rank	County	2022 Population	2023 Population
1	Rutherford	360,682	367,101
2	Knox	495,380	500,669
3	Hamilton	374,602	379,864
4	Wilson	158,593	163,674
5	Davidson	707,351	712,334
6	Montgomery	234,899	239,872
7	Sumner	203,721	207,994
8	Williamson	260,738	264,460
9	Maury	107,996	110,760
10	Loudon	58,244	60,591

Lenoir City Housing Growth



Lenoir City Development



Course Offerings



Loudon High School

- Automotive Maintenance & Light Repair
- Mechanical, Electrical, and Plumbing Systems
- Welding
- Business Management
- Diagnostic Services
- Engineering
- Digital Arts & Design
- Vet and Animal Science
- Teaching as a Profession
- Culinary Arts
- Residential and Commercial Construction
- AP Classes
- Dual Enrollment Classes

Middle Schools

- STEM
- Ag Science
- Robotics
- Digital Arts
- Carpentry
- Broadcasting
- Horticulture Science
- Intro to Coding
- Advanced Coding
- Small Engine Repair
- Culinary Arts
- Career Exploration
- Drone Racing

We are in Top 25% of TN Districts



2018-2019

Exemplary District

1 of 21 Systems out of 149. Only County System in E. TN

2020-2021

Top 10%

Only 7 districts in TN were Exemplary

2021-2022

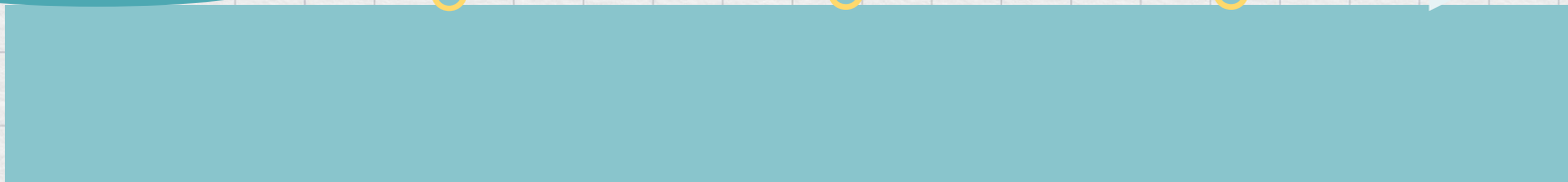
Advancing District

Only 10 districts in TN designated Exemplary

2022-2023

Advancing District

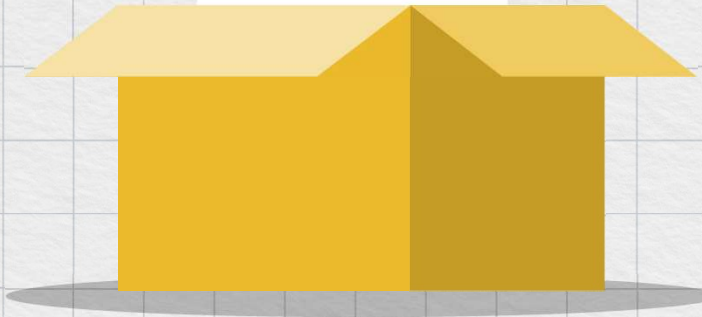
Only 12 districts in TN designated Exemplary





Third Grade Proficiency

1. Loudon County	46.94% proficient (met expectations + exceeded expectations)
2. Knox County	42.9%
3. Roane County	40.96%
4. Blount County	37.04%
5. Sevier County	35.27%
6. Lenoir City	31.79%
7. Metro-Nashville	29.68%
8. Monroe County	26.67%



Reward Schools

2018-2019

Eaton, Highland Park, North Middle, Philadelphia

2020-2021

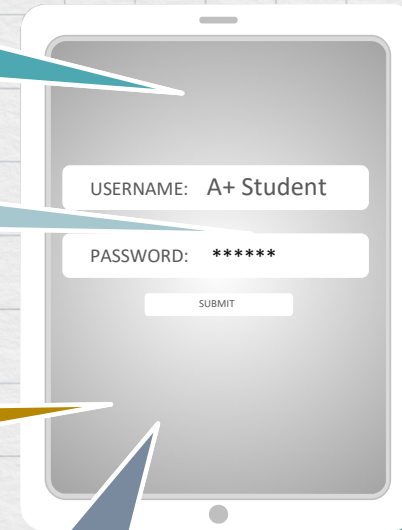
Highland Park and North Middle

2021-2022

Eaton and Highland Park

2022-2023

Eaton and Philadelphia



School Accountability

Student Academic Growth



Graduation Rate
92.5% - 2017
94.8% - 2018
93.4% - 2019
96.8% - 2020
93.4% - 2021
96% - 2022

Top 20%

3rd and 8th grade
English Language Arts

Scholarships

More than
\$4,000,000.00



ACT Growth
19.3 - 2017
20.7 - 2018
19.8 - 2019
20.0 - 2020
18.9 - 2021
19.7 - 2022

Success Rate

Ready Graduate

- 45.8% - 2022-2023
- 39.7% - 2021-2022
- 39.8% - 2020-2021
- 39.7% - 2019-2020
- 38.8% - 2018-2019

English/Language Arts

- 39.8% - 2023 (State 38.1%)
- 38.2% - 2022
- 38.6% - 2021
- 35.7% - 2020
- 38.4% - 2019
- 38.4% - 2018

Mathematics

- 41.5% - 2023 (State 33.8%)
- 40.8% - 2022
- 44.2% - 2021
- 39.9% - 2020
- 49.3% - 2019
- 44.0% - 2018


A central illustration shows two hands holding a tablet. The tablet screen displays a login form with the following fields and buttons:

- USERNAME: I Succeed
- PASSWORD: *****
- SUBMIT

Tax Levy

- Appraised Value = \$400,000
- Assessment Ratio 25%
- Assessed Value = \$100,000
- Tax Rate = \$1.52
- Tax Levy = \$1,520
- Increased Rate = \$1.77
- Tax Levy = \$1,770
- \$250 over 12 months,
- \$20.83 per month

- Appraised Value = \$200,000
- Assessment Ratio 25%
- Assessed Value = \$50,000
- Tax Rate = \$1.52
- Tax Levy = \$760
- Increased Rate = \$1.77
- Tax Levy = \$885
- \$125 over 12 months,
- \$10.41 per month



Cope Presentation



[Click here for presentation](#)

COPE OUR PROCESS

SCHEDULE OUR TIME AND STAFF



KICK-OFF MEETING/DESIGN CHARRETTES/WORKSHOPS

- Define Problems
- Define Goals
- Evaluate Current Program
- Review/Modify Current Options and Compare Sites
- Estimate Costs
- Review Schedule



SELECT OPTION



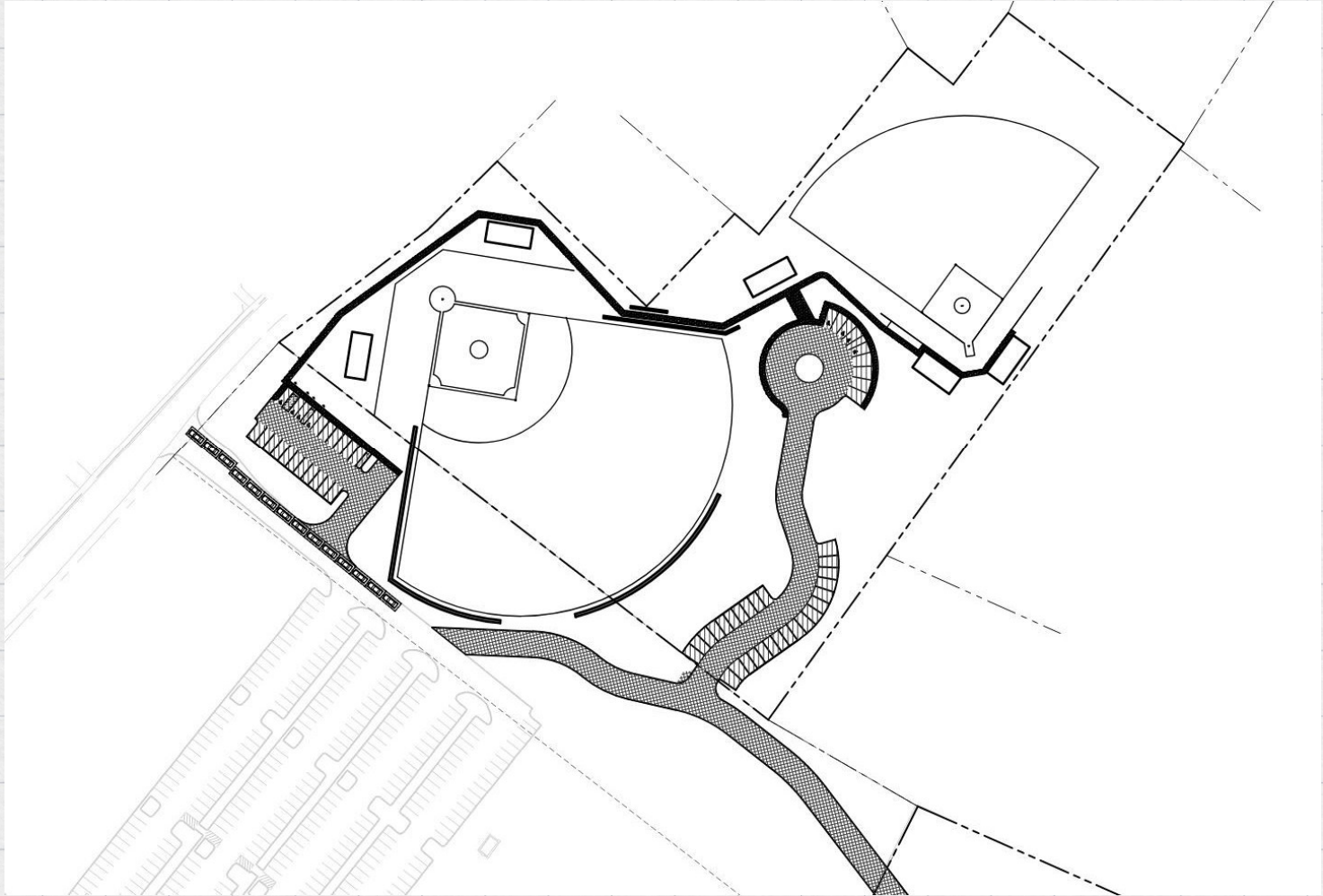
ENTER DESIGN PROCESS

- Schematic Design** Revise Budget Client Coordination
- Design Development** Revise Budget Client Coordination
- Construction Documents** Revise Budget Client Coordination
- Bid**
- Select General Contractor** Help with Contracts
- Assistance During Construction**
 - Pay Applications
 - Shop Drawings
 - Punch List
 - 1-Year Post Construction Review

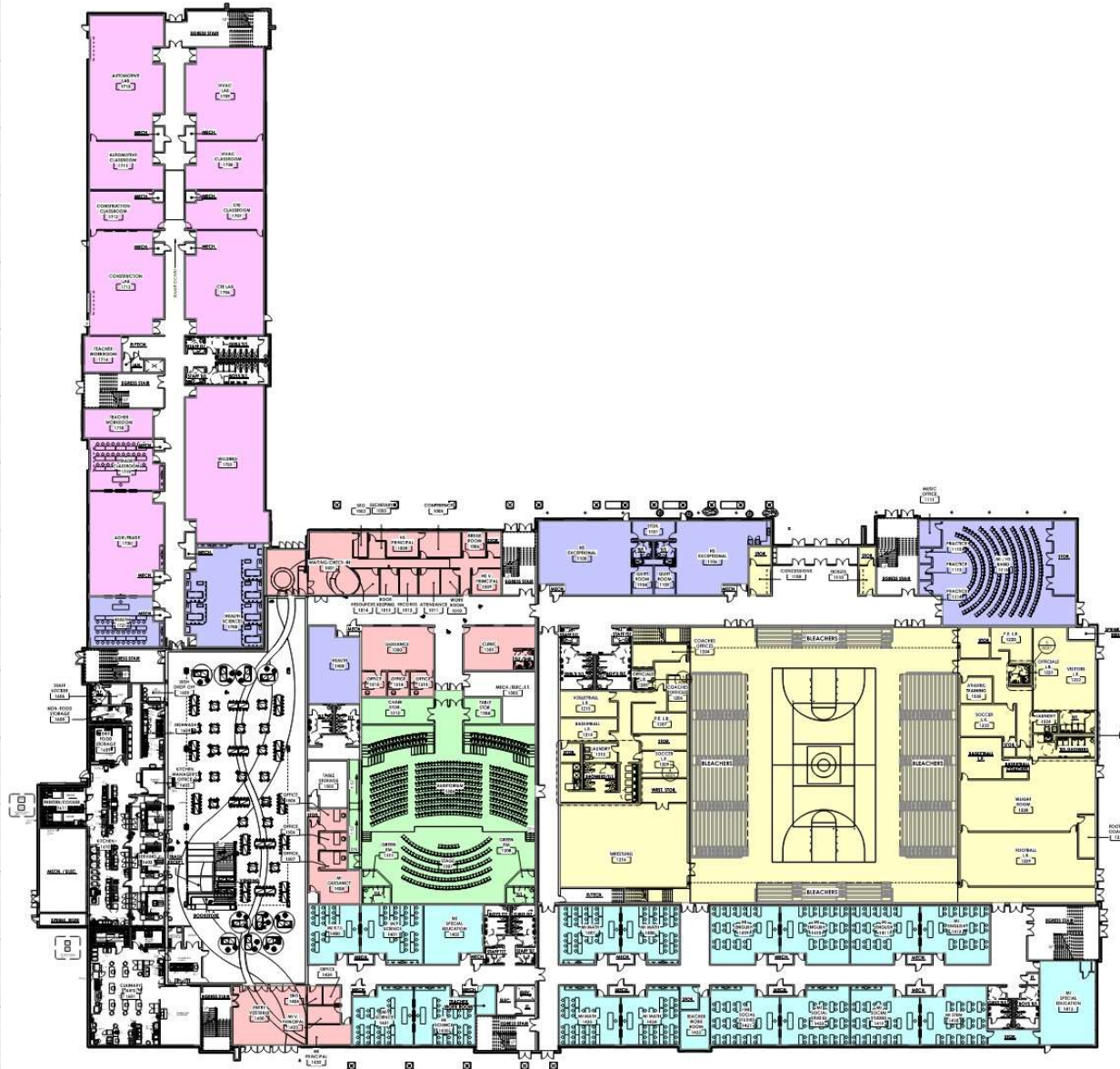




NORTH END SCHOOL

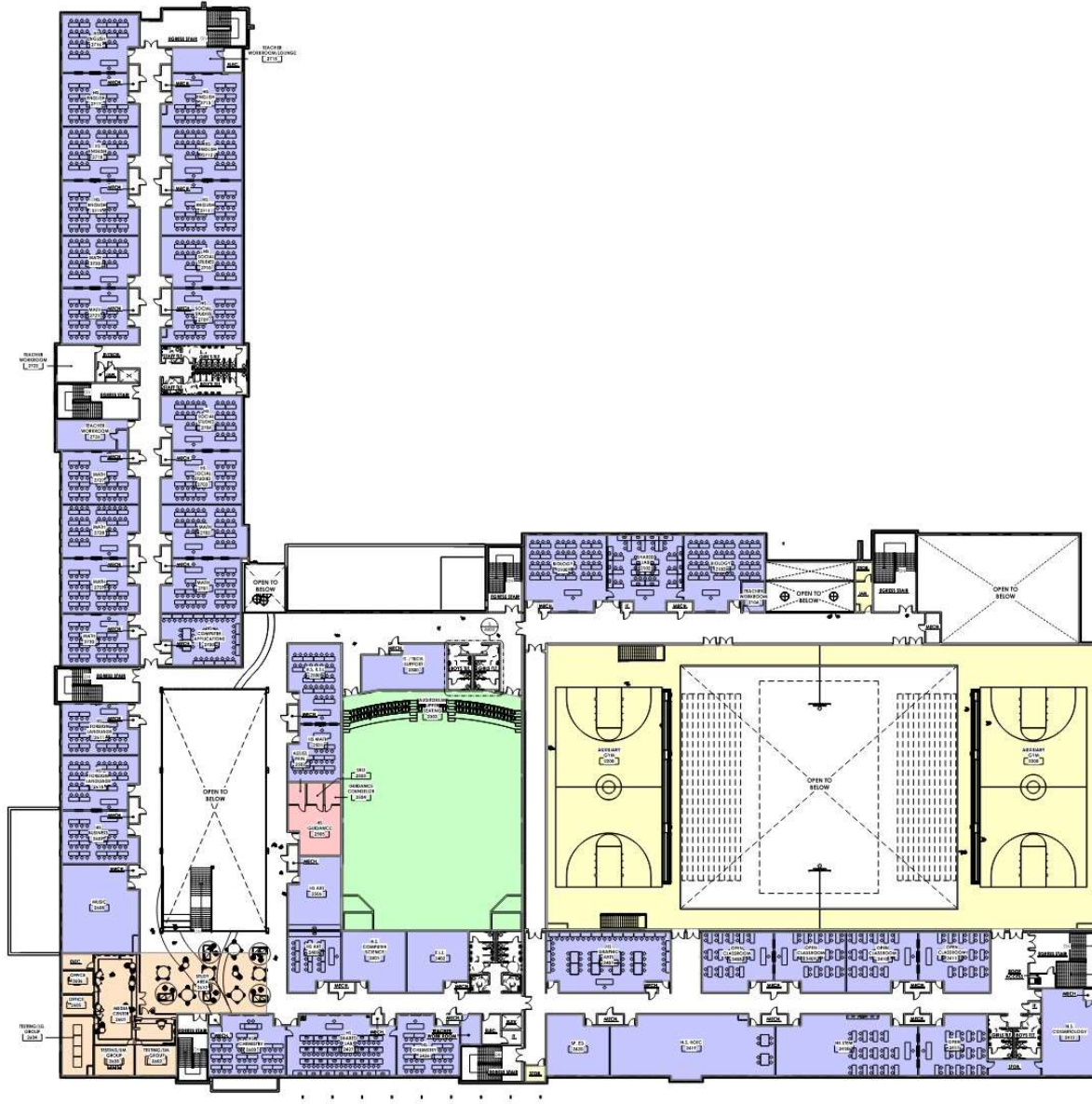


NORTH END SCHOOL



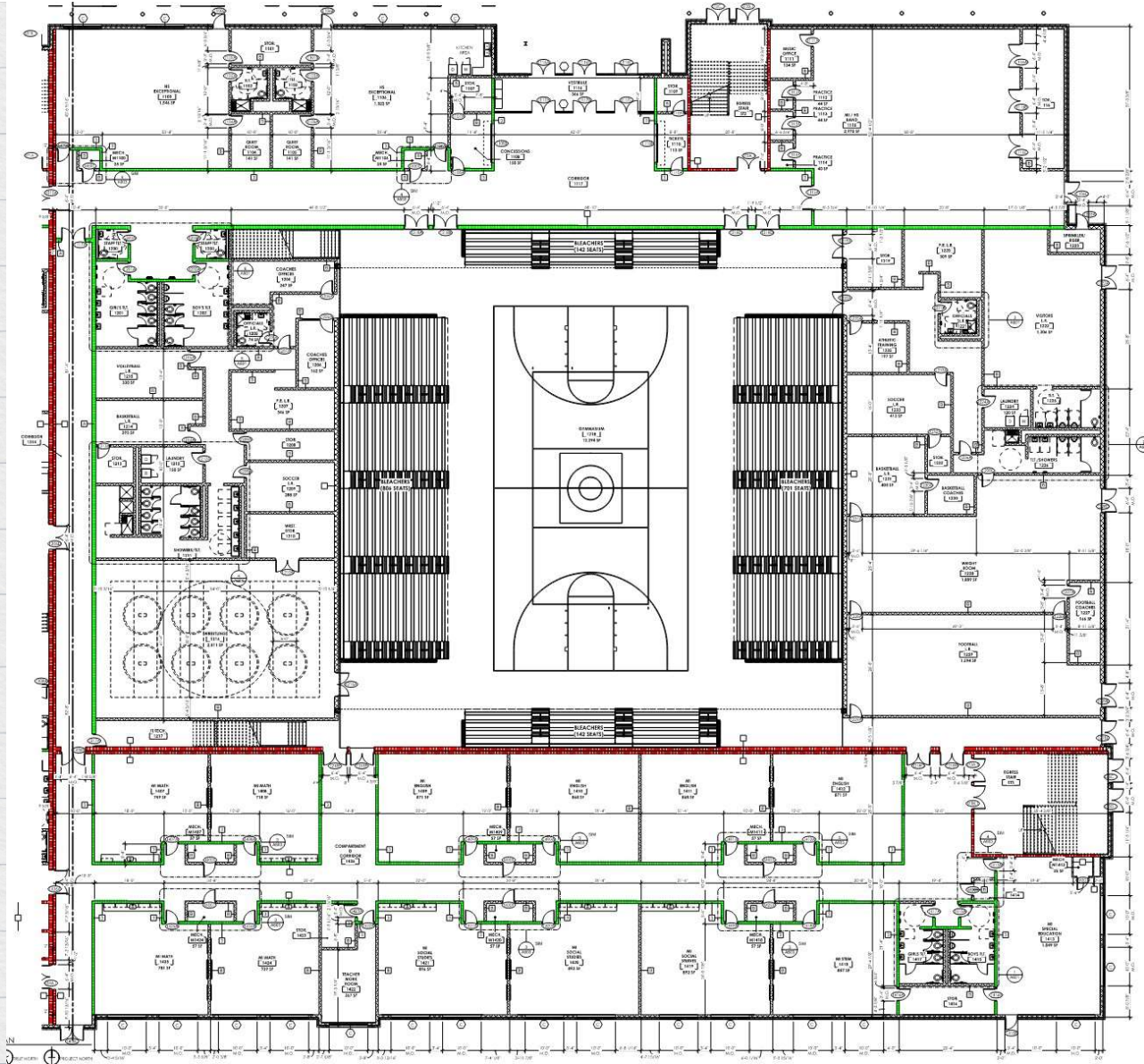
PROGRAM LEGEND	
	MI / HS ADMINISTRATION
	MI / HS ATHLETICS
	MI / HS AUDITORIUM
	MI EDUCATION
	HS EDUCATION
	CTE (CAREER AND TECHNICAL EDUCATION)
	MI / HS COMMONS

NORTH END SCHOOL

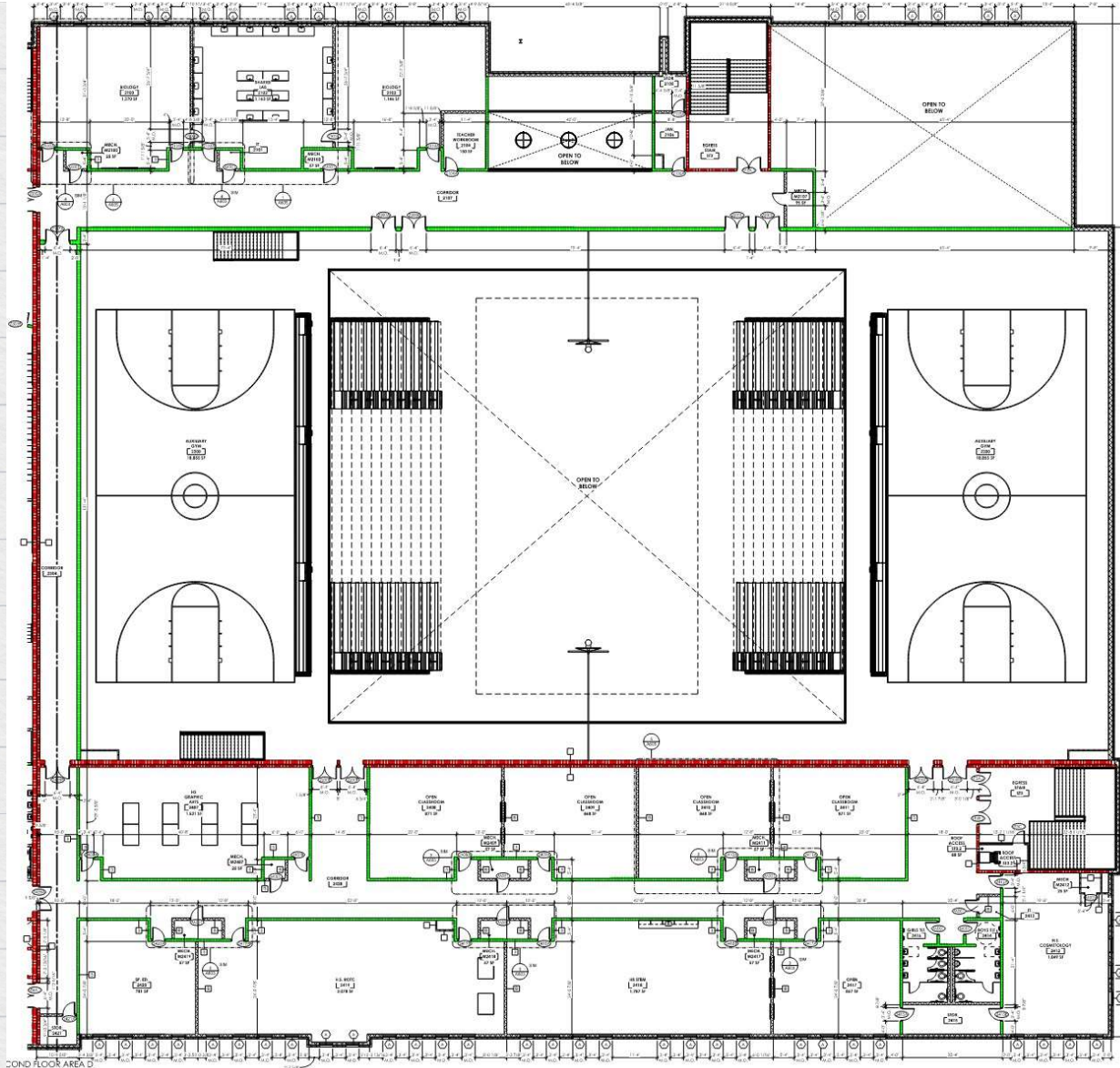


PROGRAM LEGEND	
	MI / HS ADMINISTRATION
	MI / HS ATHLETICS
	MI / HS AUDITORIUM
	MI EDUCATION
	HS EDUCATION
	CTE (CAREER AND TECHNICAL EDUCATION)
	MI / HS COMMONS

NORTH END SCHOOL



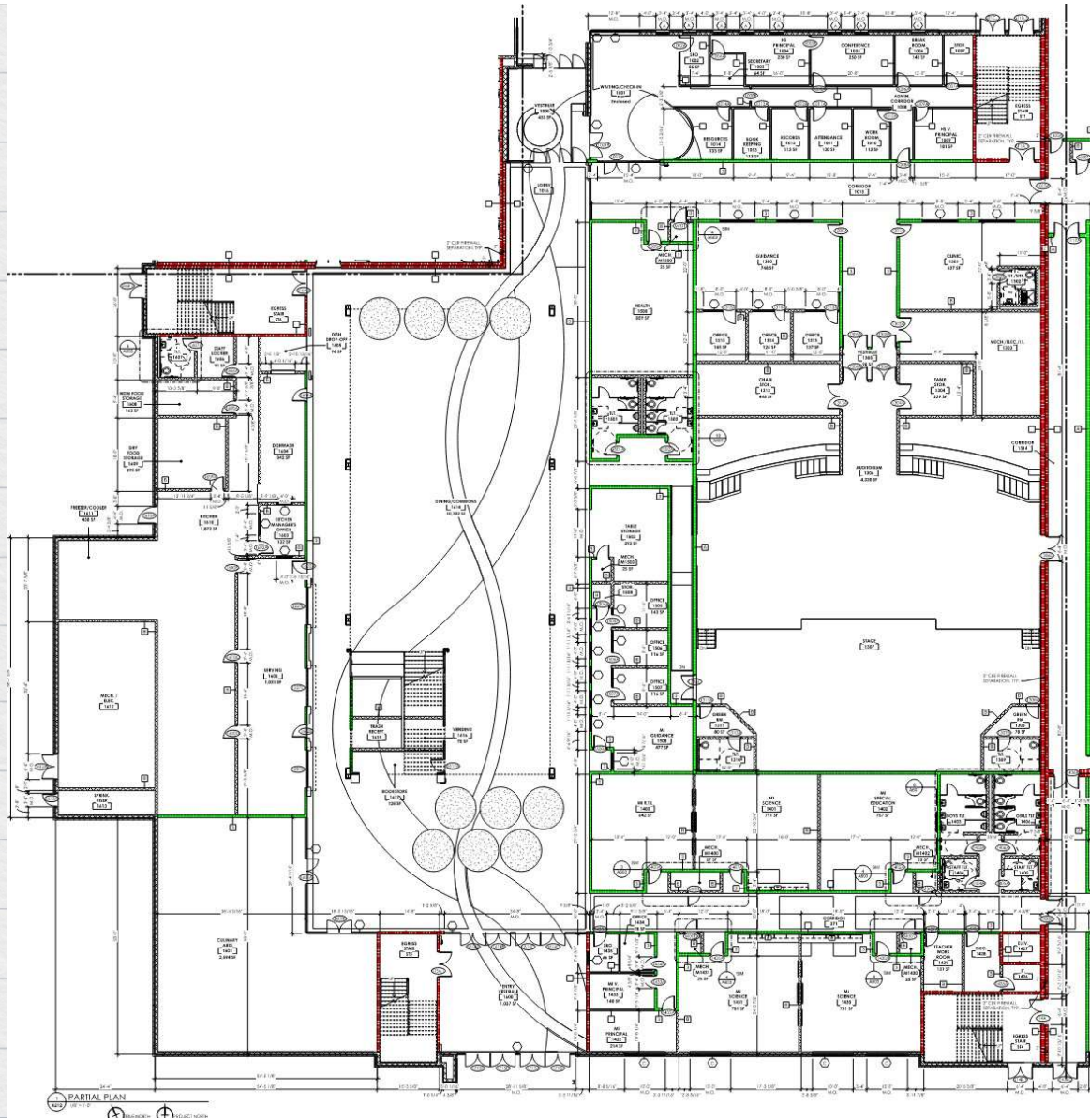
NORTH END SCHOOL



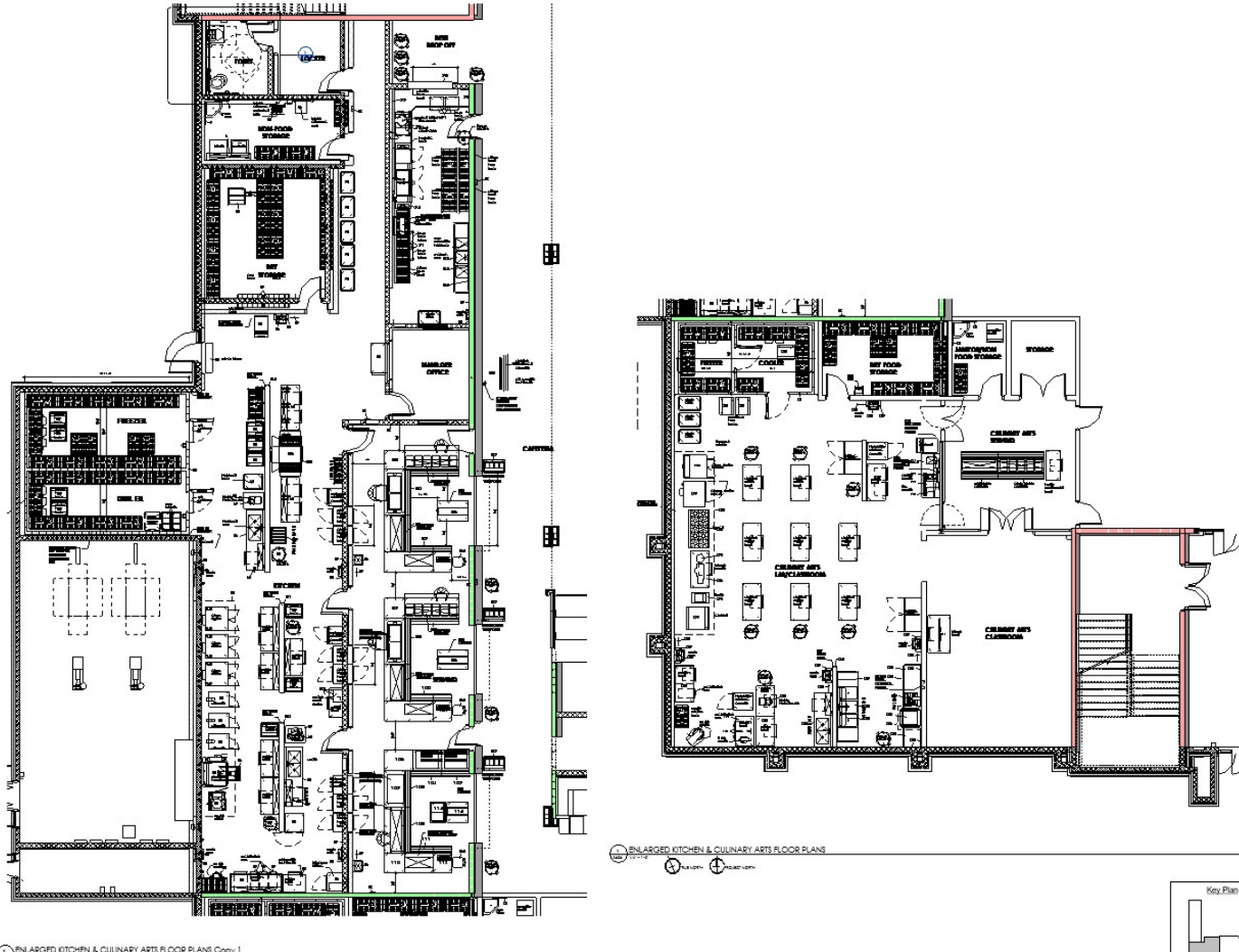
NORTH END SCHOOL



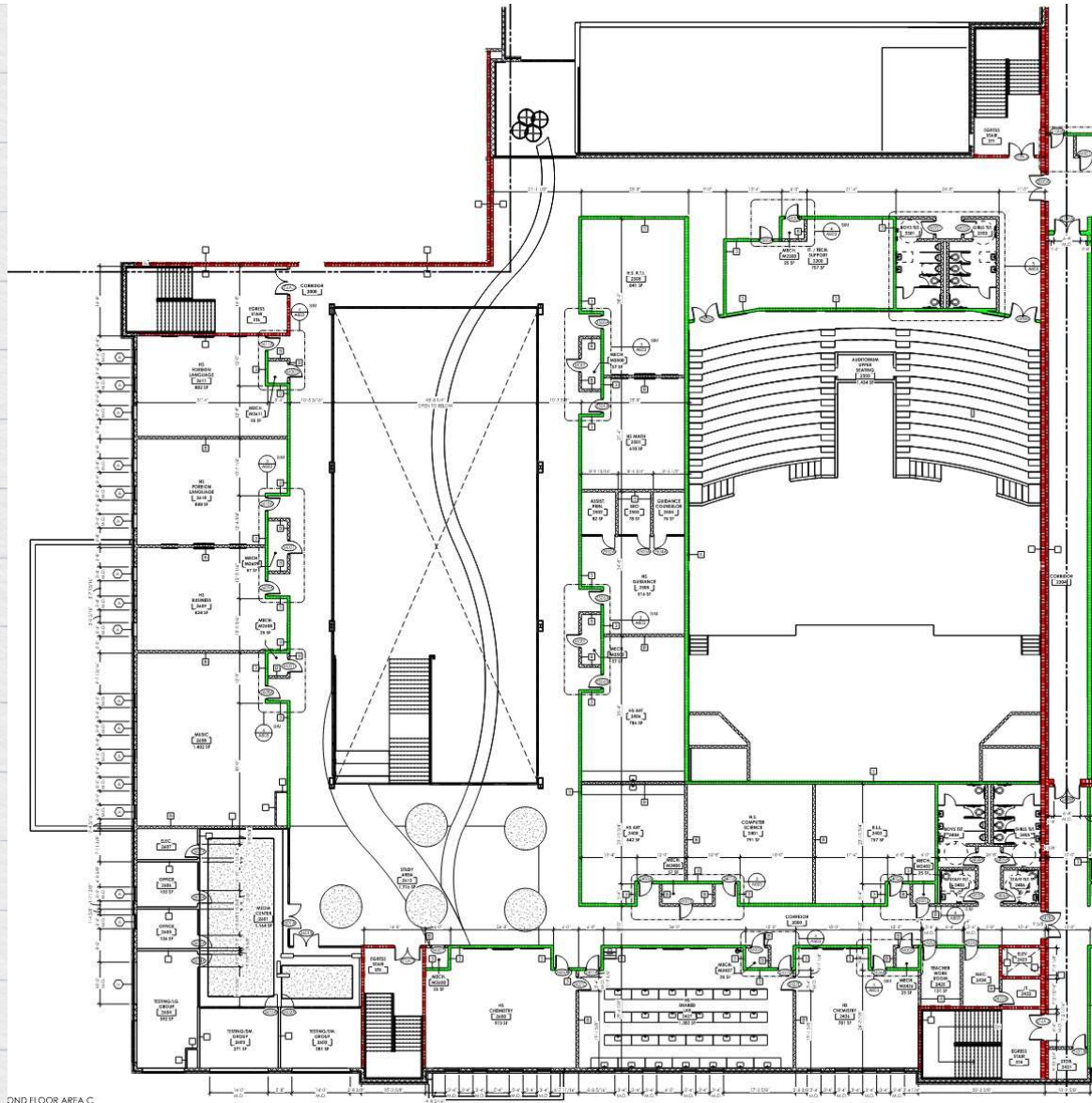
NORTH END SCHOOL



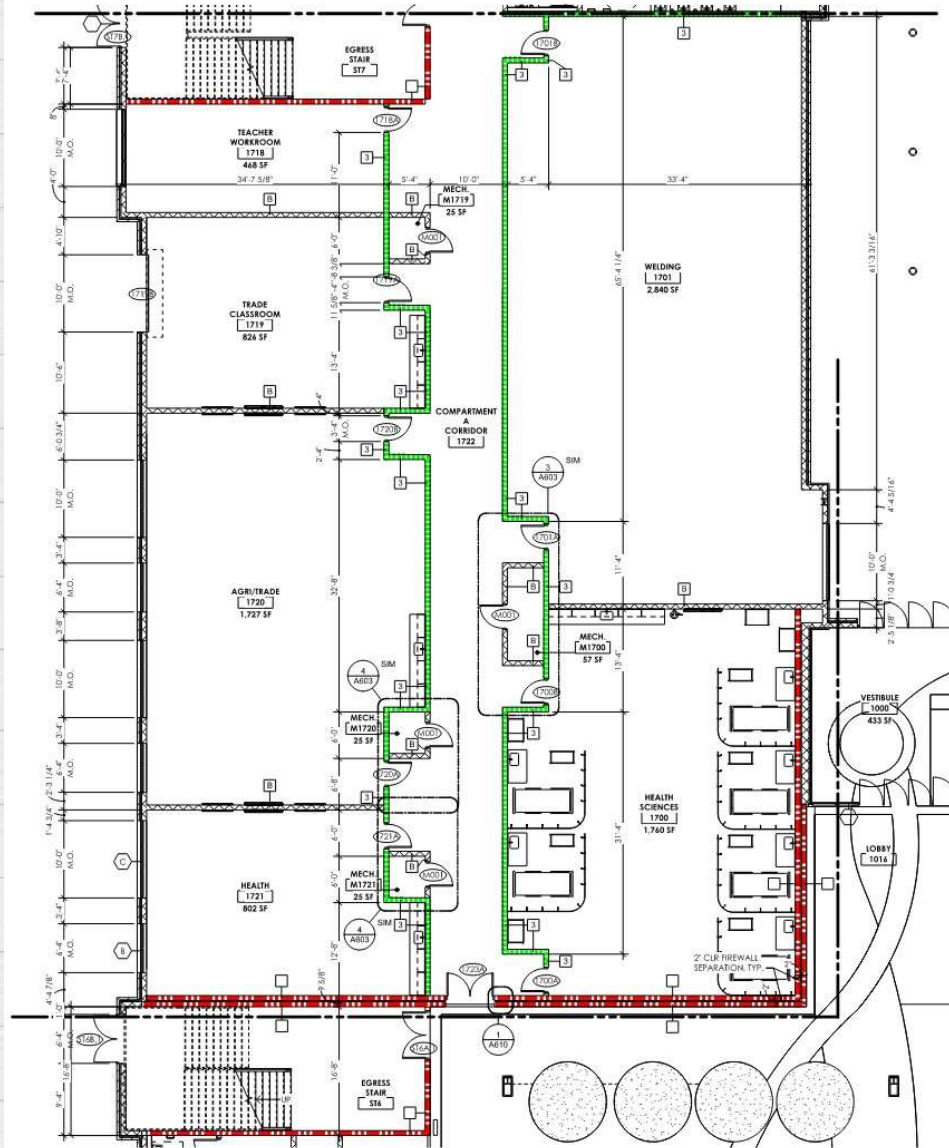
NORTH END SCHOOL



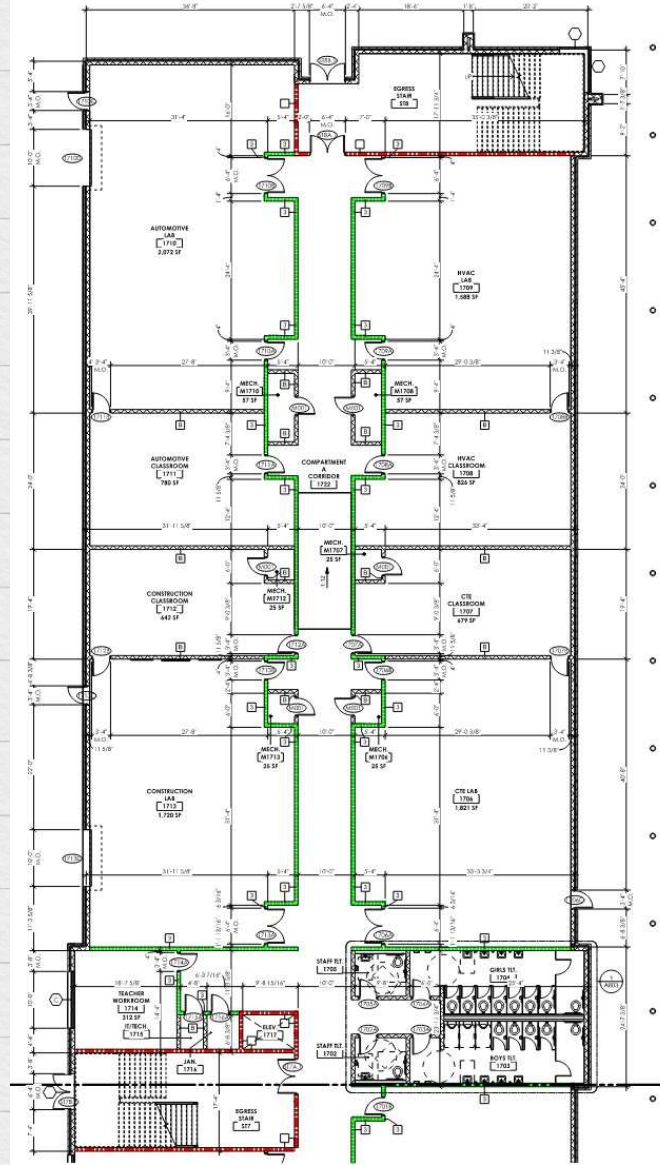
NORTH END SCHOOL



NORTH END SCHOOL



NORTH END SCHOOL



NORTH END SCHOOL



NORTH END SCHOOL



NORTH END SCHOOL



NORTH END SCHOOL



NORTH END SCHOOL



GREENBACK



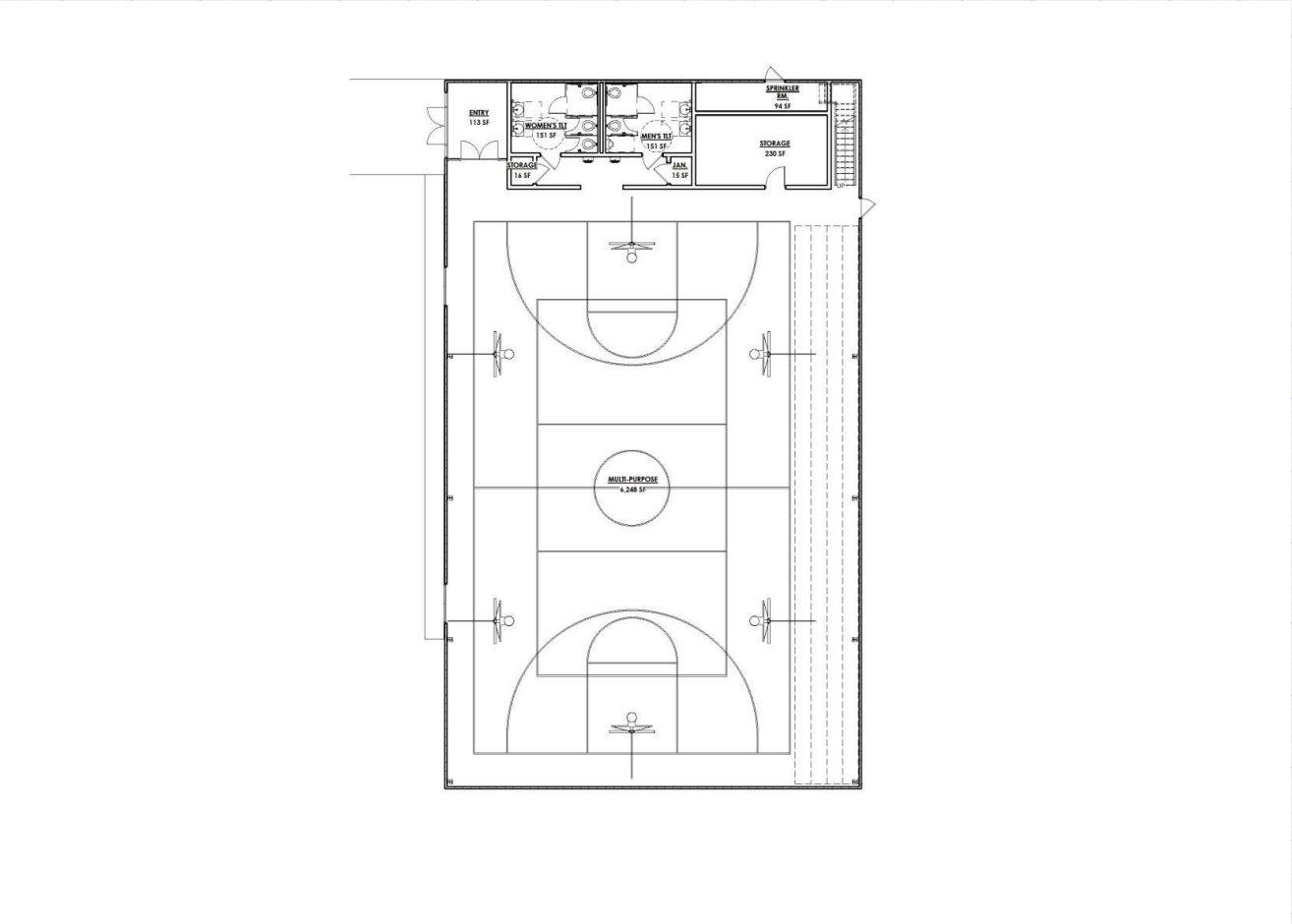
GREENBACK – FOOTBALL STADIUM



GREENBACK – AUXILIARY GYM



GREENBACK – AUXILIARY GYM



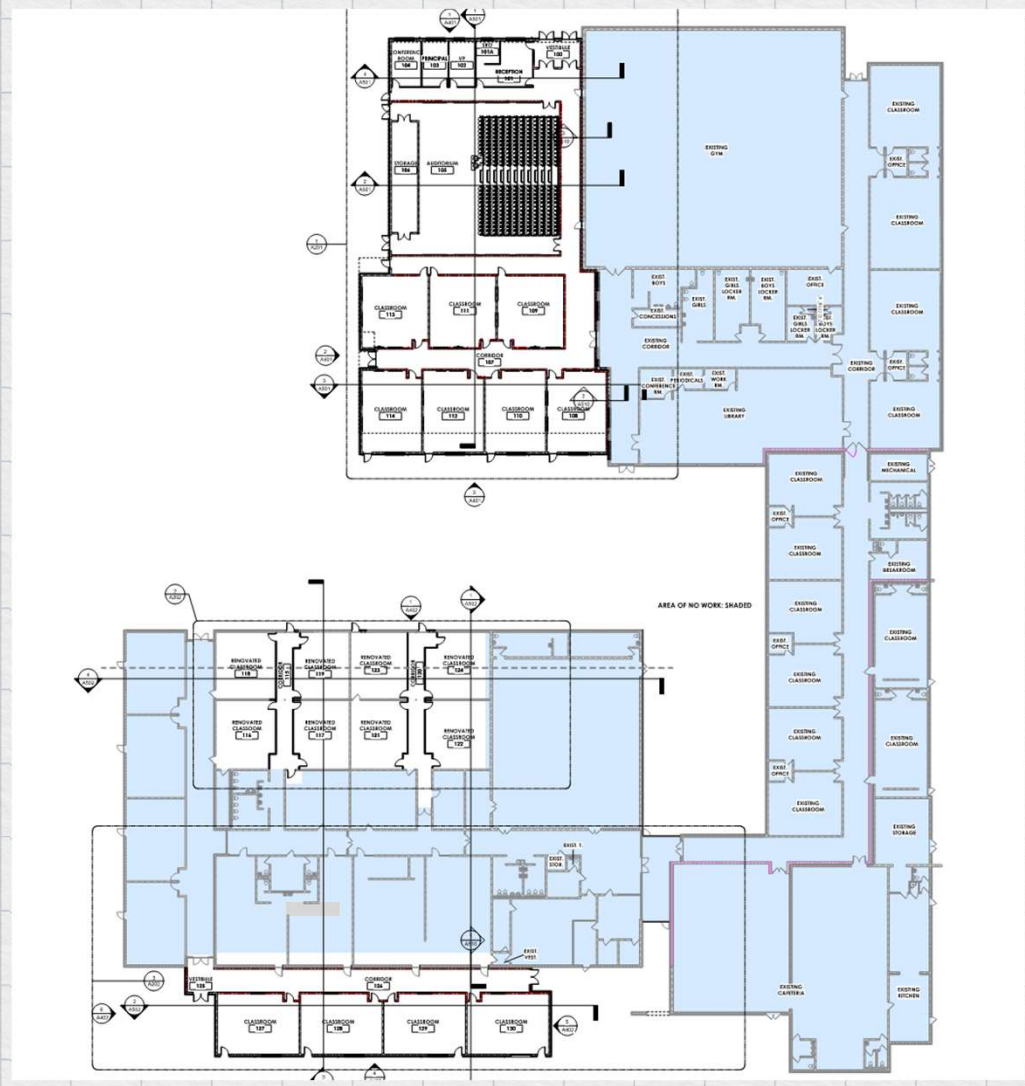
GREENBACK – AUXILIARY GYM



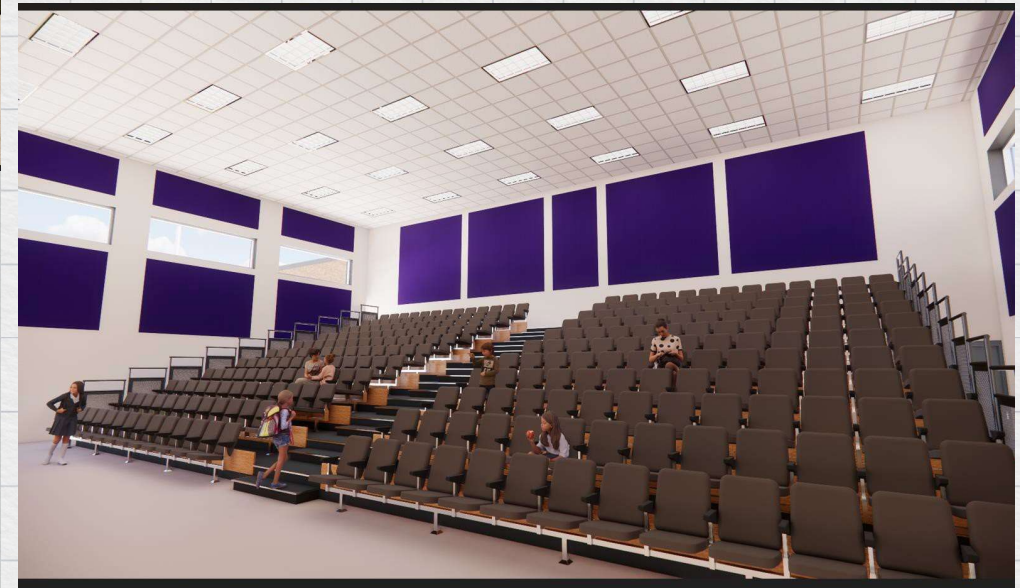
PHILADELPHIA ELEMENTARY



PHILADELPHIA ELEMENTARY



PHILADELPHIA ELEMENTARY





Thank you for your
continued support of
Loudon County Schools